

ROXEN



UPUTE ZA UGRADNJU

Prije ugradnje pažljivo pročitajte ove upute kako biste se upoznali s potrebnim alatima, materijalima i redosljedom ugradnje. Nakon ugradnje ostavite ove upute kupcu.

Prije ugradnje pregledajte WC školjku kako biste provjerili je li došlo do oštećenja za vrijeme prijevoza. U slučaju oštećenja ili vidljivog nedostatka prestajte s ugradnjom i odmah kontaktirajte svojeg dobavljača.

OPREZ: opasnost od ljetesne ozljede ili oštećenja proizvoda. Oprez pri rukovanju. U slučaju neopreznog rukovanja porculan se može razbiti ili otkrnuti.

- pregledajte sva lokalna vodovodna i građevinska propise.
- pažljivo pregledajte novu WC školjku radi oštećenja.
- ako postojeća WC školjka nema ventili za dovod i zatvaranje dovoda vode ispod vodokotlića, ugradite takav ventili prije ugradnje nove WC školjke.

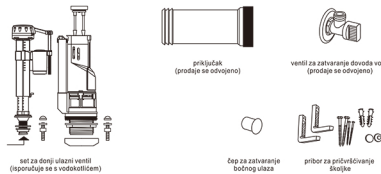
Potrebni alati i materijali



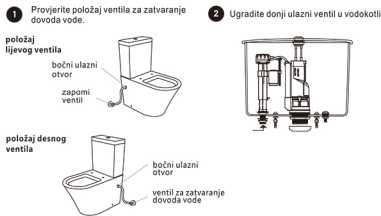
ROXEN

Monoblok

Utvrđivanje dijelova



Priprema za ugradnju – Ugradnja kotlića – Donji ulaz



ROXEN

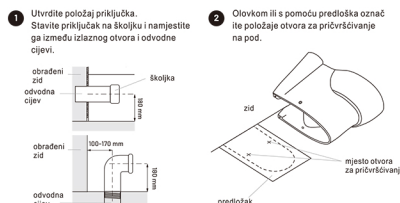
- Namjestite vodokotlić na školjku centrirajući brtvu na ulazni otvor školjke. Pritegnite vijke kako bi izravnali vodokotlić.
- Spojte crijevo za dovod vode s ulaznim otvorom kotlića i umetnite crijevo u školjku kroz odgovarajući bočni otvor.



- Spojte crijevo za dovod vode s ventilom za zatvaranje dovoda vode kako bi ispitati sustav radi curenja. Zatvorite dovod vode i odvojite crijevo. Zatvorite čepom otvor koji se ne upotrebljava.



Ugradnja školjke



ROXEN

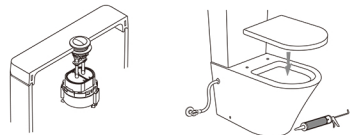
- Izbušite otvore za pričvršćivanje na označenim mjestima na podu i prema potrebi umetnite sidrene vijke.



- Stavite brtveni prsten na svaki šestokutni vijak i učvrstite držače za pod.
- Namjestite školjku na označeno mjesto, pritom pazite na čvrstu povezanost s priključkom za školjku.
- Umetnite plastične tuljace za vijke i s pomoću vijaka pričvrstite školjku na držače. Pričvrstite kromirane kapice na glave vijaka.

Završetak ugradnje

- Namjestite poklopac i provjerite tipke. Prema potrebi namjestite šipke.
- Ugradite sjedalo prema priloženoj uputi proizvođača. Prednji rub sjedala trebao bi pratiti prednji rub školjke.



- Namjestite silikonski brtveni prsten između priključka za sjedalo i školjke, kako bi sjedalo bilo čvrsto.
- Spojte crijevo za dovod vode s ventilom za zatvaranje dovoda vode. Ispitajte sustav radi curenja.
- Nanesite odgovarajuće sredstvo za brtvljenje između školjke i susjednih površina.

ROXEN

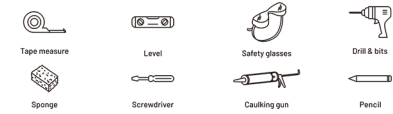


INSTALLATION INSTRUCTIONS

Before proceeding with installation, please read these instructions carefully to familiarise yourself with the required tools, materials and installation sequences. Please leave these instructions for the consumer after installation. Prior to installation, inspect the toilet to ensure that no damage has occurred in transit. If damage has occurred, or a visible defect exists, do not proceed with installation, and advise your supplier immediately.

- Observe all local plumbing and building codes.
- Carefully inspect the new toilet for damage.
- If the existing toilet does not have a supply shut-off valve below the cistern, install one before installing the new toilet.

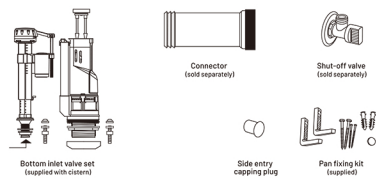
Tools and material required



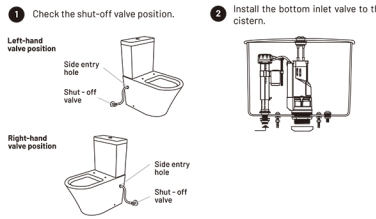
ROXEN

Floor toilet with tank

Parts identification

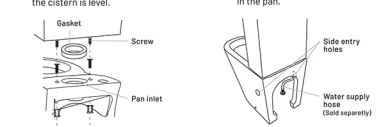


Preparing to install – Cistern installation – Bottom inlet



ROXEN

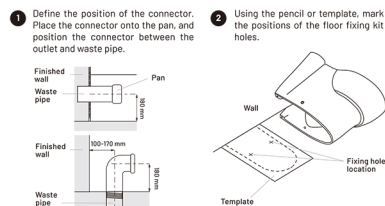
- Position the cistern on the pan by centering the gasket on the pan inlet. Securely tighten the screws so the cistern is level.
- Connect the supply hose to the cistern inlet and feed the hose through the appropriate side hole in the pan.



- Connect the supply hose to the shut-off valve to test the system for leaks. Shut off the water supply and disconnect the hose. Insert a capping plug into the unused hole.

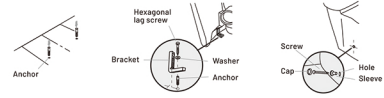


Pan installation



ROXEN

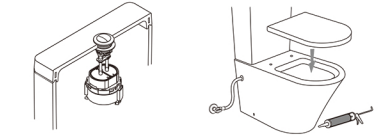
- Drill fixing holes at the marked locations on the floor and insert the anchors where required.
- Place a washer onto each of the hexagon screws and fix the brackets to the floor.



- Position the toilet in the marked location, while ensuring an effective connection is made with the pan connector.
- Install the plastic screw sleeves and use the screws to fix the toilet to the brackets. Attached the chromed caps to the screw heads.

Finalising installation

- Fit the lid and test the buttons. Adjust the rods as required.
- Install the seat as per the supplied seat instructions front edge of seat. Should follow the shape of the front edge of the pan.



- Ensure silicon rubber washer is fitted between seat connector and pan to ensure seat is rigid.
- Make final connection of water supply hose to shut-off valve. Test the system for leaks.
- Apply a suitable sealant between the pan and adjacent surfaces.